

St. Charles Borromeo Catholic Parish

No. 9 of a Series on Our Parish's First 100 Years

(The following is an excerpt - lightly edited - from the November 11, 1910, Standard Democrat)



ST. CHARLES' CONGREGATION MOVES INTO NEW CHURCH

Dedication of Burlington's Second Catholic Church, Sunday,
Important Event in Church History of Burlington
Most Rev. Archbishop Messmer Here

Sunday, November 6, 1910, was a day long to be remembered by St. Charles' Catholic congregation of this city, for on that day their handsome new edifice was dedicated to the worship of God with imposing and impressive ceremonies.

Rev. Philipp Dreis, who came to this city two years ago, being soon after appointed pastor of the new congregation, was a proud and happy man, for he saw his flock assembled in their own house of worship.

The day was bright with sunshine and the large building was able to accommodate only part of the many friends of the congregation who wished to be present at the dedication. It is estimated that there were fully 1,200 people within the structure, but still a large number were unable to gain admittance.

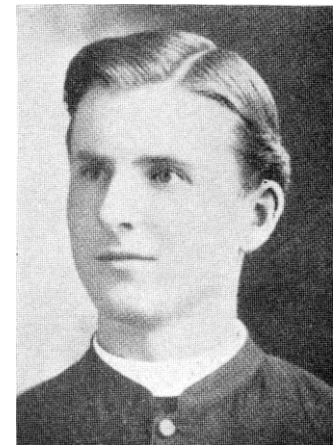
The dedication services were in charge of the Most Rev. Archbishop Sebastian G. Messmer of this diocese. The other officers of the ceremony were: Deacon, Rev. Henry Niehaus, spiritual director of the Notre Dame convent, Milwaukee; sub-deacon, Rev. John Pierron, professor of St. Francis seminary; master of ceremonies, Rev. Edward B. Schiefen, of Dover.



Rev. Anthony G. Weiler, son of Nicholas and Eva (Gill) Weiler and a graduate of St. Mary's grade school, sang the High Mass at the dedication of St. Charles Church on November 6, 1910.

At promptly 11 o'clock Archbishop Messmer appeared, robed in the cloth of his standing, and preceded by the acolytes and clergy, went through the school rooms and around the auditorium of the church, giving it the heavenly blessing. Following this, High Mass was sung by Rev. Anthony Weiler, of Racine. Music was furnished during the services by a mixed choir under the direction of Mrs. Mary Smolensky. The dedicatory sermon was preached by Rev. James McCarthy, of Ft. Atkinson, who took as his leading thought "Go Bring Forth Fruit." He stated that the splendid

new church edifice showed the material fruits of the Christianity of Burlington. A church signifies man's respect for God, and is the reception room of God and the gate to heaven. He pointed out that without God no man is perfectly satisfied, and sounded a warning against materialism. In closing he congratulated the congregation and trusted the church would ever be an honor to the patron saint, St. Charles.



Rev. James McCarthy, son of John and Julia McCarthy (and brother of John L. McCarthy) and a graduate of St. Mary's grade school, gave the sermon at the dedication of St. Charles Church on November 6, 1910.

Rev. Dreis announced that Mass would be celebrated in the church at 8 o'clock every morning except Saturday, when it would be at 6:30 a.m. Services on Sunday mornings would be at 8 and 10 o'clock.

Archbishop Messmer then confirmed the following class of forty-two:

Mary Baumeister	Howard Bauman	Helen Beix	William Beller
Charles Christien	Corona Christien	Lorenza David	John Gerlaff
Joseph Grossman	Joseph Hoelz	Leo Hoelz	Lorenz Isferding
Alfred Ketterhagen	Irene Kortendick	Paulina Kortendick	Martha Leber
Clara Maag	George Maag	Herbert Maag	Leona Martin
Catherine Mathews	Margaret Mealy	Ernestina Miller	Eleanor Mutchler
Helen Prasch	Christopher Quinn	Charles Reinardy	Esther Reuschlein
Florence Reuschlein	Francis Rewald	Joseph Rittmann	Raymond Rittmann
Amanda Rose	Cecelia Rose	Katherine Stradinger	Cecelia Terhorst
Bardo Verhalen	Coletta Verhalen	Herbert Wegge	Adelaid Yambor
William Yambor	Mrs. Magdalena Reuschlein		

The interior of St. Charles Church is finished in white and presents a very neat, artistic appearance. The altar is finished with white enamel, and trimmed with pure leaf gold, and while not elaborate, is very neat. There are three statues, the Sacred Heart of Jesus, the Heart of Mary, and St. Anthony. They add a beautiful touch to the front of the church. The communion rail is of quartered oak.

(Standard Democrat, Nov. 11, 1910)

In a short address Archbishop Messmer voiced his surprise at finding so elegant a church and school building, and congratulated the congregation on their splendid achievement. He said they were to be congratulated especially for having provided a school, as it was the duty of parents to make their children children of God and not rich. He brought out that the future of any church depended on the growing generation, so thought the school more necessary than the church, and said that every child's education should include Christianity, so that they may be brought up to appreciate the church.

A beautiful but tedious piece of handwork has just been completed, and donated to Rev. Dreis by Mrs. Fred Leber. It is a church garment and will be worn at the dedication of the new St. Charles Church, at Mass. The garment is plain netting with a solid border 19 inches deep and 33 yards long, all done by hand. It is similar to one she made for the St. Mary's Church twenty years ago. The waist part is fine linen and is donated by Mrs. William Keough.

(Standard Democrat, Oct. 7, 1910)

At the close of his address, benediction was sung, and the important event came to a close. The following priests were present besides those taking part: Rev. John H. Schiefen, New Munster; Rev. August Albers, Waterford; Rev. Frank C. Kleser, Brighton; Rev. Matthew M. Gerend, St. Francis; Rev. Frederick J. Hillenbrand, Lyons, and Rev. Henry Dreis, Madison.

The members of St. Eustachius and Sacred Heart Societies and of the Father Wisbauer Court of Foresters attended in a body.

Rev. Frederick J. Hillenbrand, who was present at the dedication of St. Charles Church on November 6, 1910, was pastor of St. Joseph's at Lyons at that time. St. Joseph's had just dedicated its new church building on October 27, 1910, less than 2 weeks before St. Charles was dedicated. At that dedication, Father Dreis of St. Charles had been Deacon.

The new St. Joseph's Church, erected by Burlington contractor, Joseph A. Rueter, replaced the original St. Joseph's Church, which had been built in 1870.

Father Hillenbrand was later (1927) appointed pastor of St. Charles, replacing Father Dreis, who was transferred to Holy Name Parish at Sheboygan.

(to be continued)